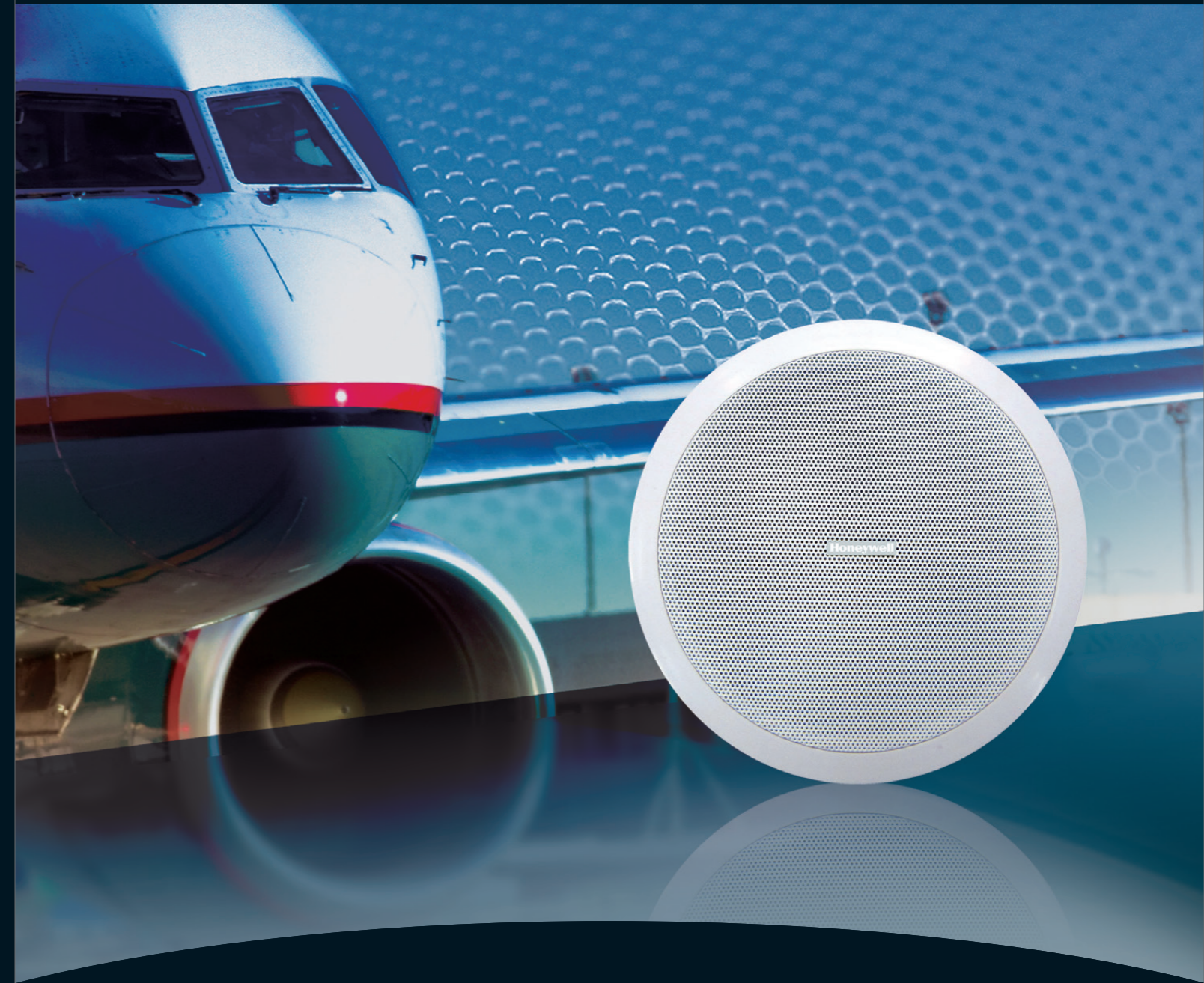


**Honeywell Audiovisuals** is a strategic business unit of Honeywell Life Safety under global Fortune 500 Honeywell International Inc. Honeywell Audiovisuals is specialized in designing, developing, manufacturing and selling public address and voice alarm systems. Being an expert in acoustic excellence, our mission statement is to provide our customers who need sound and voice propagation a better, safer, and a more efficient public address management system and solution.

As a global leading manufacturer, Honeywell Audiovisuals is always in pursuit of innovations and driven by the most cutting edge technologies. With an experienced team of R&D elites working in world-class laboratories, Honeywell Audiovisuals implements the most efficient operation and strictest quality control system in the industry. Our advanced design concepts focus on networkability, modularization, and user-friendliness. "Empower the Sound" is our promise to create a greater value to our customers around the world.



## Extend Leadership into Acoustic Excellence

High Quality Loudspeakers for  
Public Address and Voice Alarm Systems



## 02 Cabinet Loudspeaker

### L-PWP40A/L-PWP40B L-PWP60A/L-PWP60B L-PWP80A/L-PWP80B

#### ABS Full Range Cabinet

- High quality sounds effect, lucid in treble powerful in bass
- Delicate and strong ABS enclosure
- Mounting brackets available
- In a choice of charcoal and white
- Selectable 8 ohms, 70V and 100V inputs
- CE and RoHS compliant



SPECIFICATIONS	L-PWP40A/L-PWP40B	L-PWP60A/L-PWP60B	L-PWP80A/L-PWP80B
Max power	60W	80W	100W
Rated power	40W	60W	80W
Power taps @ 100V	40W / 20W / 10W	60W / 30W / 15W	80W / 40W / 20W
Power taps @ 70V	20W / 10W / 5W	30W / 15W / 7.5W	40W / 20W / 10W
SPL	99dB / 84dB (40W/1W, 130Hz-20kHz, 1m)	108dB / 90dB (60W/1W, 100Hz-20kHz, 1m)	109dB / 92dB (80W/1W, 80Hz-20kHz, 1m)
Frequency range (-10dB)	100Hz - 20kHz	80Hz - 20kHz	60Hz - 20kHz
Dispersion angle (1KHz/-6dB)	160°	135°	115°
Rated input voltage	100V / 70V / 8Ω	100V / 70V / 8Ω	100V / 70V / 8Ω
Rated impedance	250Ω / 500Ω / 1KΩ	167Ω / 333Ω / 667Ω	125Ω / 250Ω / 500Ω
Connection	Binding Post Terminals	Binding Post Terminals	Binding Post Terminals
Dimensions (W x H x D)	172 x 302 x 165mm	193 x 344 x 202mm	275 x 455 x 261mm
Diameter of speaker	5" woofer, 1" tweeter	6.5" woofer, 1" tweeter	8" woofer, 1" tweeter
Weight	3.2kg	3.8kg	7.5kg
Color	White (RAL 9003) (L-PWP40A) Charcoal (RAL 7021) (L-PWP40B)	White (RAL 9003) (L-PWP60A) Charcoal (RAL 7021) (L-PWP60B)	White (RAL 9003) (L-PWP80A) Charcoal (RAL 7021) (L-PWP80B)
Material	ABS	ABS	ABS

### L-PWP10A

#### ABS Cabinet Loudspeaker

- Multi-cone speaker with powerful and lucid audio performance
- High-impact and fire proof ABS material
- Stylish design
- Easy installation and cost effective
- CE and RoHS compliant



SPECIFICATIONS	L-PWP10A
Max power	15W
Rated power	10W
Power taps @ 100V	10W / 5W
Power taps @ 70V	5W / 2.5W
SPL at 10W/1W (200Hz - 15kHz, 1m)	101dB / 92dB
Frequency range (-10dB)	150Hz - 17KHz
Dispersion angle (1KHz/-6dB)	170°
Rated input voltage	100V / 70V
Rated impedance	1KΩ / 2KΩ
Connection	Push-in terminal block
Dimensions (W x H x D)	240 x 345 x 100mm
Diameter of speaker	6.5"
Weight	1.6kg
Color	White (RAL 9010)
Material	ABS



### L-PWP06A

#### ABS Cabinet Loudspeaker

- Superb audio and music reproduction
- High-impact ABS cabinet
- Simple power setting
- Flush mounting in ceiling, wall and furniture
- CE and RoHS compliant

SPECIFICATIONS	L-PWP06A
Max power	9W
Rated power	6W
Power taps @ 100V	6W / 3W
Power taps @ 70V	3W / 1.5W
SPL at 6W/1W (250Hz - 20kHz, 1m)	96dB / 90dB
Frequency range (-10dB)	200Hz - 20kHz
Dispersion angle (1KHz/-6dB)	120°
Rated input voltage	100V / 70V
Rated impedance	1.7KΩ / 3.3KΩ
Connection	Cable
Dimensions (W x H x D)	260 x 162 x 77mm
Diameter of speaker	5.5"
Weight	1kg
Color	White (RAL 9010)
Material	ABS

