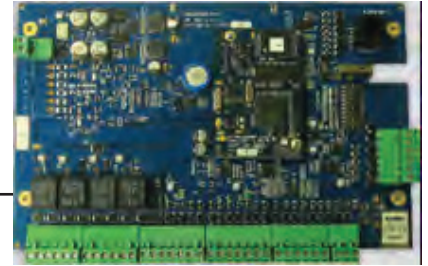


# PRO3000

## 2-Door Intelligent Controller



The PRO3000 IP-enabled controller is an advanced access control panel capable of providing solutions for medium to large applications. The PRO3000 provides power and flexibility with its 32-bit CPU architecture, TCP/IP protocol support, flash memory for firmware and large local card holder database.

The PRO3000 is designed to operate off-line, making access control decisions independently from a PC or other controlling device. It can also be connected to a host computer for system configuration, alarm monitoring and direct control. Connectivity to the host computer is accomplished via TCP/IP network connection.

The PRO3000 combines intelligent controller and reader interface into one complete unit. It connects for two readers via Wiegand controlling two doors. The controller can support up to 62 doors via RS485 multi-drop communication where 30 downstream controllers are connected to the gateway controller. This architecture can reduce the usage on LANs by using only one TCP/IP address to 62 doors.

The PRO3000 accommodates a card database of 55,000 cards, and a transaction buffer of 45,000 transactions.

The PRO3000 is designed with tile mounting configuration.

## Features

### Specifications

#### Database:

- Cardholder capacity: 55,000
- Transaction storage: 45,000
- Flash programming for firmware revision updates
- Access level: 128
- Holidays: 255
- Time zone: 127
- Card reader formats: 128 Wiegand format support
- Credential facility codes: 8
- Dedicated tamper alarm
- Dedicated power fail alarm
- Real time clock:
  - Geographic time zone support
  - Leap year support
- Embedded web server to configure network attributes

#### Environment:

- Temperature: 0 to 50° C operational;  
-55 to 85° C storage
- Humidity: 0 to 85% RHNC

#### Communication:

- Ethernet port connected to TCP/IP network as master panel
- RS485 multi-drop connection for downstream panels

#### Onboard I/O:

- 2 Readers, expandable to 62 readers per gateway controller
- 8 Supervised inputs
- 4 Relay outputs

#### Operational Functionality:

- Operational modes:
  - Card only
  - Card and PIN
- Maximum site codes: 8 digit
- Anti-Passback support:
  - Local
  - Global
  - Forgiveness
- Interlocks: 256
- Duress alarm

#### Dimensions:

- 152mm W x 229mm H

#### Approvals:

- CE/FCC/C-TICK

#### Recommended Readers: Smart Card Readers:

JT-MCR Mifare CSN Readers  
HON-MSR Mifare Sector Readers  
OmniClass Readers  
HID iClass Readers

#### Proximity Readers:

OmniProx Readers  
HID Proximity

#### Biometrics Readers:

HON-FIN3000 Fingerprint  
Bioscript

# PRO3000

## 2-Door Intelligent Controller

### Benefits

#### More IT-friendly

Onboard Ethernet port allows seamless connection to TCP/IP networks

#### Bigger Databases

Cardholder capacity of 55,000 and transaction storage of 45,000

#### Easier to Deploy

Integrated hardware structural design simplifies installation and expansion

#### More Secure

Distributed architecture makes risk of failure highly dispersed

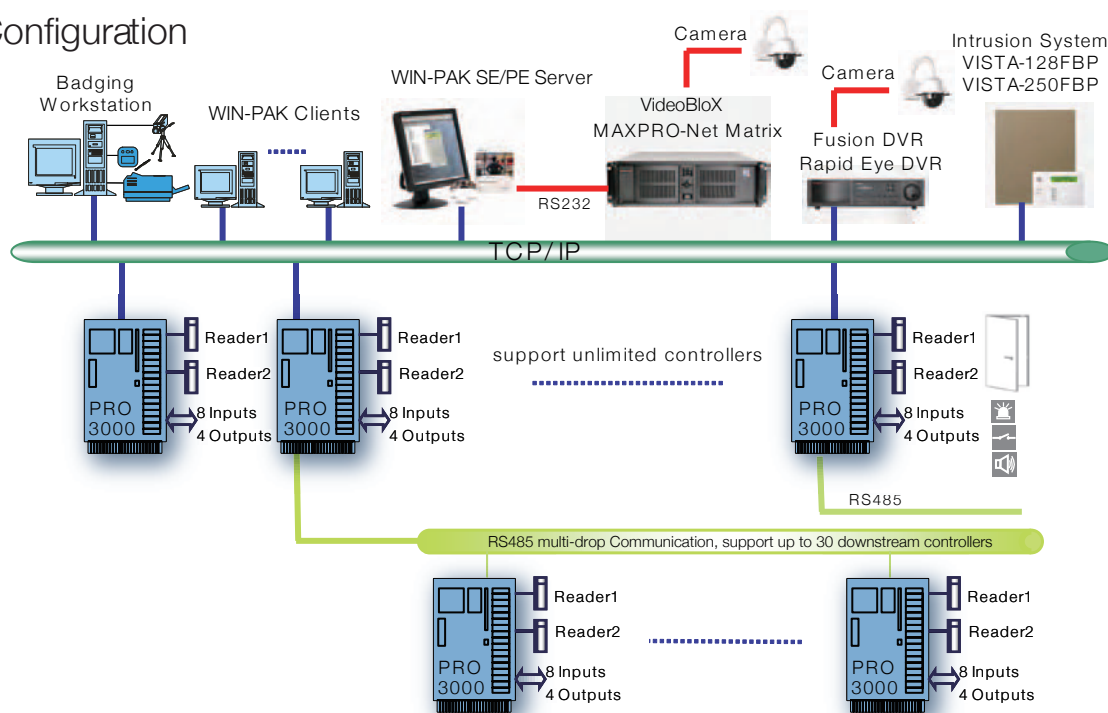
- True 32-bit microprocessor provides fast transaction processing for the most demanding network applications
- TCP/IP-based distributed hardware architecture allows for economic system installation
- Flash memory allows new versions of firmware to be downloaded from the host computer to the controller(s) through the central network
- Large, local controller database allows access control decisions to be made by controller in real time without the need to communicate to the server
- Scalable architecture ensures optimal performance with a seamless upgrade path to accommodate future growth beyond initial installation

### Ordering Information

Order #	Description
PRO3000	PRO3000 2-door intelligent Controller

\*Note: Honeywell reserves the right, without notification, to make changes in product design and/or specifications.

### System Configuration



For more information:

Security Asia Pacific Headquarters  
Security Australia Sales Hotline  
Security China Sales Hotline  
Security Hong Kong  
Security India

Tel: (86) 21 2219 6888  
Tel: 1300 234 234  
Tel: 400-8800-330  
Tel: (852) 2405 2323  
Tel: (91) 124 497 5000

Security Indonesia  
Security Korea  
Security Singapore  
Security Taiwan  
Security Thailand

Tel: (62 21) 536 52322  
Tel: (82) 2 799 6114  
Tel: (65) 6355 2828  
Tel: (886) 2 2245 1000  
Tel: (66) 2 693 3099

[www.asia.security.honeywell.com](http://www.asia.security.honeywell.com)  
[security.ap@honeywell.com](mailto:security.ap@honeywell.com)

Honeywell Security Group  
Automation & Control Solutions  
Honeywell International Inc.  
[www.security.honeywell.com](http://www.security.honeywell.com)

Mar 2015  
© 2015 Honeywell International Inc.

# Honeywell